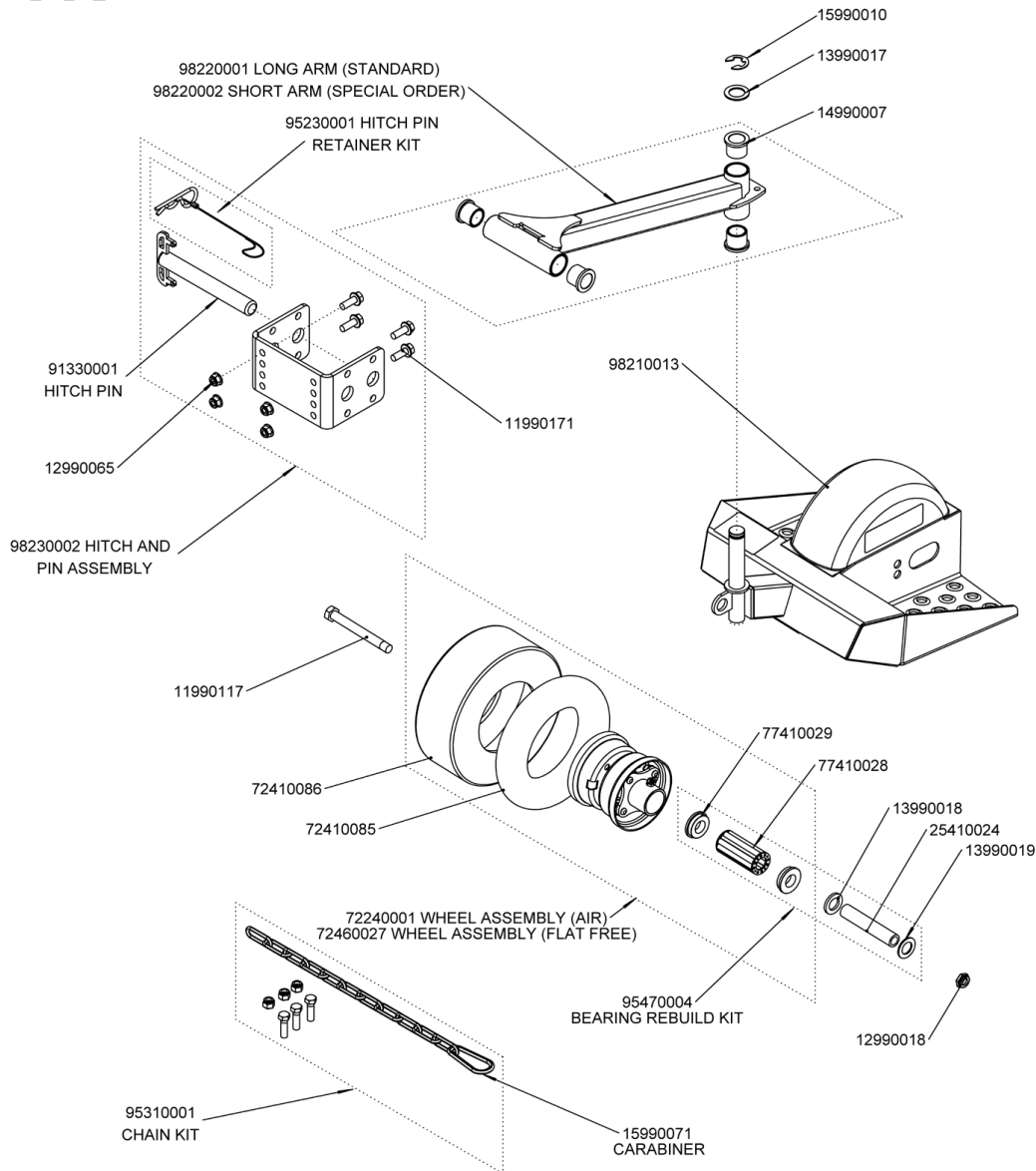


VK



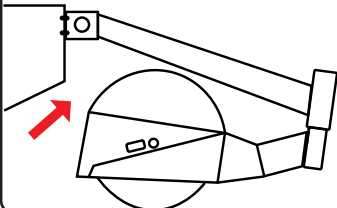
Before Fitment

Grease wheel bearings. Immediate bearing failure will occur without doing so.

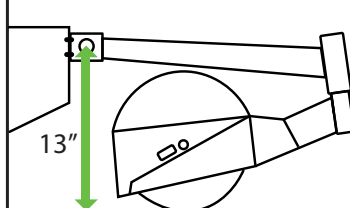
Fitment:

Hitch Too High

The Velke may be run over by the mower when backing up on uneven ground.

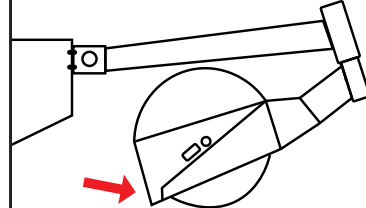


Hitch Height 13" From Pin



Hitch Too Low

The rear of the platform could contact the ground possibly causing turf damage.



VKX2

